

SENTINEL [S4 SRC]

UNISEX: 2011 GREEN

SIZE: EU 36-46 UK 3-11

S4 CE UK EN ISO 20345:2011 [S4 SRC]



Insulation provides protection at temperatures as low as -20°

PU upper

Regular fit

Polyester lining



WATERPROOF upper to permanently repel water and keep your feet dry



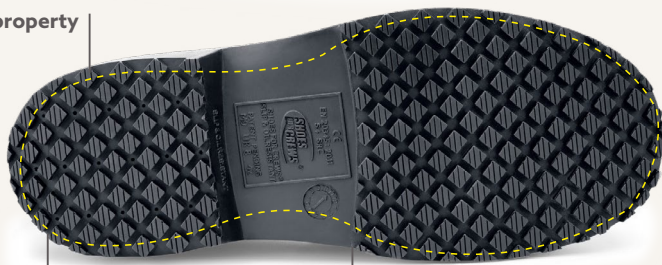
STEEL SAFETY TOE - 200 joules

DATA GUIDE	
Certification:	EN ISO 20345:2011 [S4 SRC]
Upper Material:	PU
Lining Material:	Polyester
Midssole Material:	PU
Outsole Material:	Rubber
Safety Toe Cap:	Steel



Click or scan QR code to view certificate

Antistatic property



EXTREMELY SLIP-RESISTANT OUTSOLE

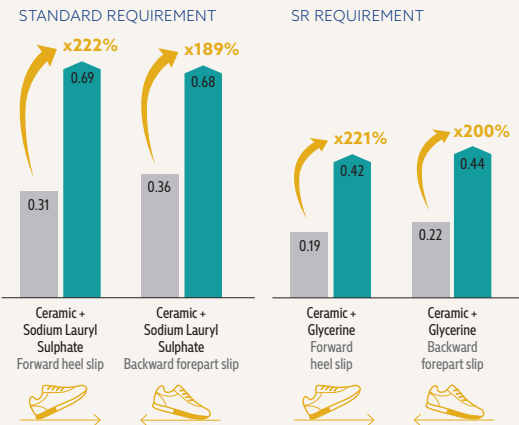
- Exceeds the industry norm SR according to EN ISO 20344:2021 slip resistance test
- Larger surface covered by the outsole provides better slip-resistance



CLOG-RESISTANT OUTSOLE

- Traction lugs have wide spacing which won't let dirt and debris get stuck in the outsole

TESTING THE SLIP RESISTANCE OF OUR SFC OUTSOLE [EN ISO 20344:2021]



Slip resistance test according to EN ISO 20344:2021, conducted by Intertek Testing Services Shenzhen Ltd., in August 2022, on a scale of 0.0 (without slip resistance) to 1.0 (very high level of slip resistance, e.g. on dry carpeted floors). All SFC shoes are fitted with the patented, slip-resistant Shoes For Crews outsole. Tested product: Carrig Low 62201.

Energy absorbing heel construction



Fuel resistant



Removable cushioned insole - recycled EVA

Weight (per shoe):
575 grams
(based on size 38)

36 cm shaft height



Sentinel Blue: 2012

Also available:



Sentinel White/Blue: 2010/2010B

