

# GUARDIAN [S4 SRC]

UNISEX: 2017B WHITE/BLUE

SIZE: EU 37-48 UK 37-48

S4 CE UK EN ISO 20345:2011 [S4 SRC]

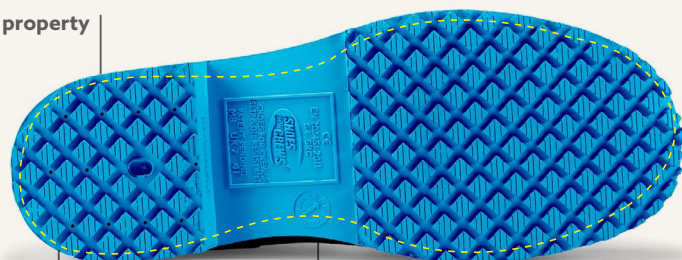


PVC upper

Regular fit

Polyester lining

Antistatic property



Energy absorbing heel construction

Fuel resistant



Removable cushioned insole - recycled EVA



Weight (per shoe):  
840 grams  
(based on size 38)

40 cm shaft height



**WATERPROOF** upper to permanently repel water and keep your feet dry



**STEEL SAFETY TOE** - 200 joules



**EXTREMELY SLIP-RESISTANT OUTSOLE**

- Exceeds the industry norm SR according to EN ISO 20344:2021 slip resistance test
- Larger surface covered by the outsole provides better slip-resistance



**CLOG-RESISTANT OUTSOLE**

- Traction lugs have wide spacing which won't let dirt and debris get stuck in the outsole

## DATA GUIDE

Certification:	EN ISO 20345:2011 [S4 SRC]
Upper Material:	PVC
Lining Material:	Polyester
Midsole Material:	PVC
Outsole Material:	Rubber
Safety Toe Cap:	Steel

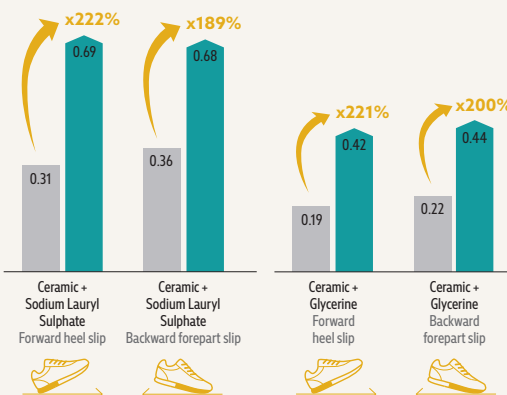


Click or scan QR code to view certificate

## TESTING THE SLIP RESISTANCE OF OUR SFC OUTSOLE [EN ISO 20344:2021]

STANDARD REQUIREMENT

SR REQUIREMENT



Slip resistance test according to EN ISO 20344:2021, conducted by Intertek Testing Services Shenzhen Ltd., in August 2022, on a scale of 0.0 (without slip resistance) to 1.0 (very high level of slip resistance, e.g. on dry carpeted floors). All SFC shoes are fitted with the patented, slip-resistant Shoes For Crews outsole. Tested product: Carrig Low 62201.



Also available:

Guardian Green: 2018

**SHOES FOR CREWS**